



Alex & Matteo
ESTATE AGENTS



Odessa Street, London, SE16 7LX

Guide Price £475,000 to £500,000. A generous and recently refurbished riverside two bedroom apartment, located in tranquil Rotherhithe enjoying stunning Thames views. The apartment features a naturally bright reception room with plenty of space to dine, a modern kitchen, stylish bathroom, and two spacious double bedrooms, one boasting an en-suite. Additional storage can be found in the hallway. The surrounding area boasts many local amenities including independent cafes pubs, a city farm, as well as restaurants and supermarkets in Canada Water. The greenery of the Stave Hill Ecological Park is around the corner.

Years on Lease - 943
Annual Service Charge: £2956
Annual Sinking Funds: £650
Annual Ground Rent - £37.10
Council Tax Band - C

Council tax and, where applicable, lease information, service charges and ground rent are given as a guide only and should always be checked and confirmed by your Solicitor prior to exchange of contracts.

- CHAIN FREE
- Stunning River Thames Views
- Recently Refurbished
- Walking Distance from Ever so Popular Canada Water Masterplan
- Communal Garden
- Great Transport Links
- Free Parking and Bicycle Storage on The Premises
- Long Lease
- Tranquil Location
- Two Bedroom Riverside Apartment

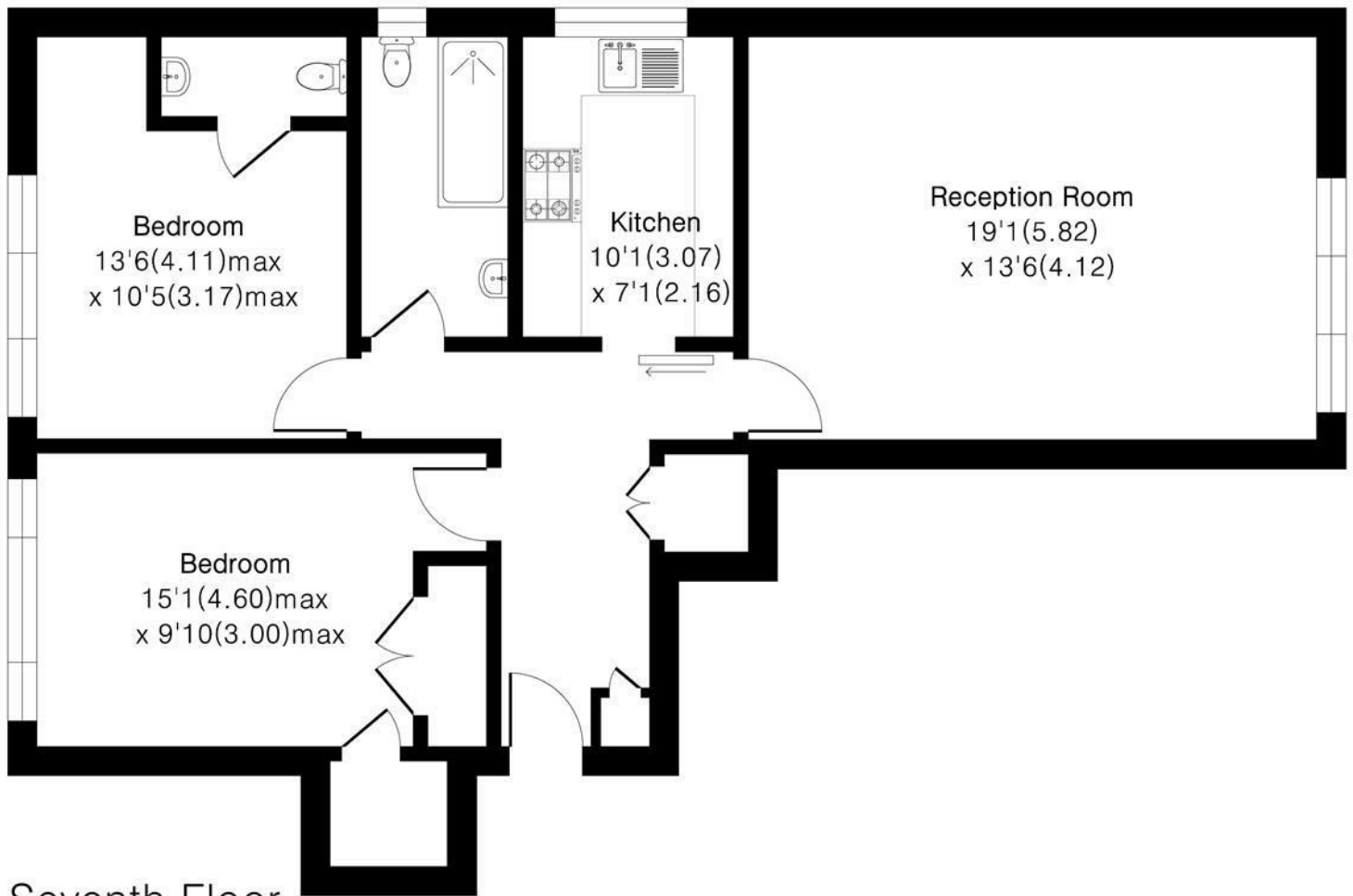
Alex & Matteo
ESTATE AGENTS

Guide price £475,000



Custom House SE16

Approximate Area = 803 sq ft / 74.6 sq m



Seventh Floor

Floor plan Produced in accordance with RICS Property Measurement 2nd Edition. Incorporating International Property Measurement Standards (IPMS2 Residential). Produced for Alex & Matteo Estate Agents.



Energy Efficiency Rating		
	Current	Potential
Very energy efficient - lower running costs		
(92 plus) A		
(81-91) B		
(69-80) C	74	79
(55-68) D		
(39-54) E		
(21-38) F		
(1-20) G		
Not energy efficient - higher running costs		
England & Wales		
EU Directive 2002/91/EC		